



A revolution in water purification

SCALE BLASTER®

The water softener alternative

**Commercial Electronic Descaler
Model # DISH-1200**



**Premium Model — up to 1½" Pipe
special wave signal for dishwashers only**

New Going Green Model

Scale Blaster® - the electronic descaler

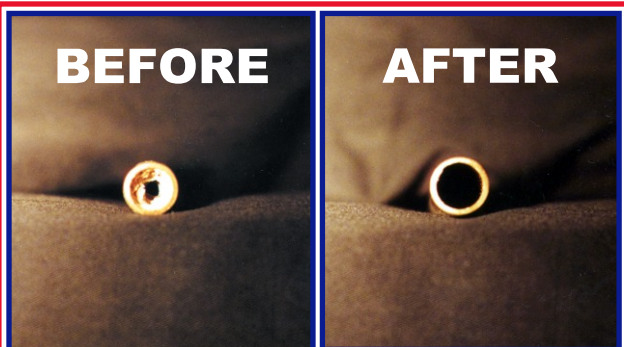
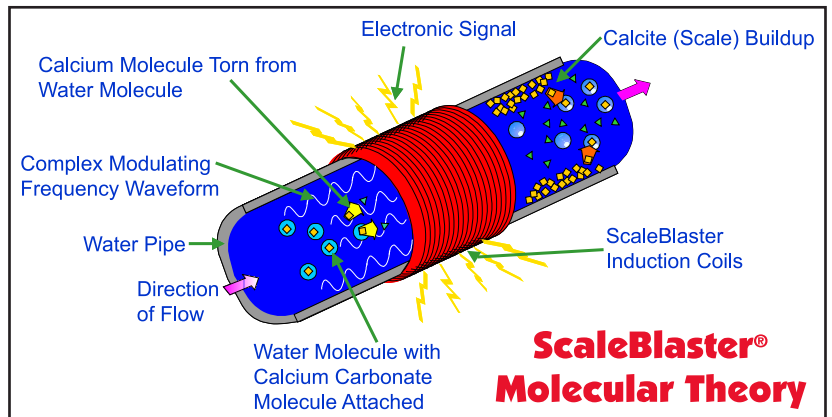
Revolutionary Breakthrough in Technology!

ScaleBlaster's® signal cable produces an oscillating and complex modulating frequency wave form that produces an inaudible sonic impulse that changes the electrical and physical properties of the scale-forming calcium molecules. This causes the adhesive properties of the calcium carbonate crystals and other minerals to repel rather than adhere to pipes, fixtures and remain suspended in the water. This action stops any further build-up of scale and because the solubility of the water is increased, existing scale is taken back into the water and gradually removed.

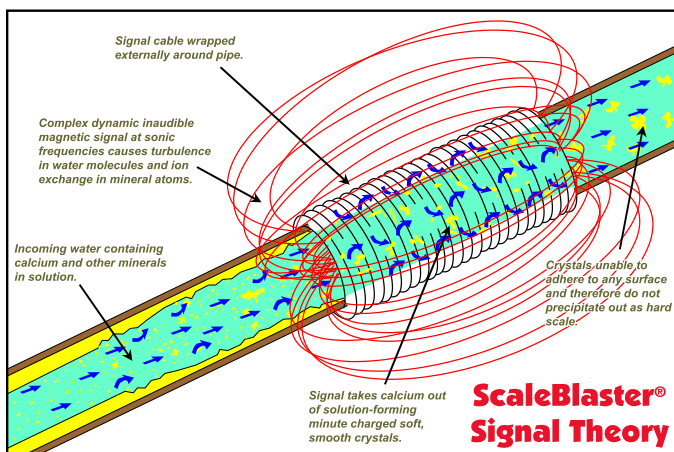
Absolutely No Maintenance Required

Up until now, the only other solution to your hard water problems was a water softener...

WATER SOFTENER	SCALEBLASTER®
Expensive to purchase	Inexpensive to purchase
Requires constant maintenance	Never needs maintenance
Makes skin feel dry	Makes skin feel softer
Makes water feel slippery	Makes water feel "silky"
Soap suds difficult to remove	Soap suds wash away easily
Exchanges calcium for salt	Does not require salt
Harmful for people on salt restricted diets	No effect with people on salt restricted diets
Requires regular service calls	Requires no service calls



Actual photographs of household pipe before installation of ScaleBlaster® and 32 days later. The pipe was completely descaled. Testing done by Centre Analytical Laboratories, PA.



DISH-1200 ELECTRONIC DESCALER SPECIFICATION SHEET

PIPE SIZE CAPACITY: up to 1 1/2" pipe size diameter.

Designed for residential use only.

PIPE TYPE: PVC, PEX, copper or any non-ferrous based pipe.

INPUT VOLTAGE/CURRENT: 100 to 240 VAC, @ < 800mA

INPUT POWER: < 30 Watt

OUTPUT VOLTAGE: 5V (open circuit).

OUTPUT CURRENT: 2000 mA on each of the 2 outputs

INPUT FUSE (x2): 1Amp, 250VAC, 5x20mm, fast acting (F1 on pcb)
(Radio Shack part # 270-1063)

OUTPUT FUSE (x2): 4Amp, 250VAC, 5x20mm, slow acting (F2 on pcb)
(Radio Shack part # 270-1066)

DESCALING METHOD: The control box supplies a square wave signal to a coil of wire that is wrapped around the pipe. The signal is changed anywhere from 1,000 to 30,000 times a second, producing a modulating frequency waveform that hits the resonant frequency of the calcium molecules causing them to lose it's adhesiveness.

ENCLOSURE DIMENSIONS: 11.75" x 9" x 3.5"

ENCLOSURE SPECS: made out of high-impact ABS molded plastic, NEMA 4X rated, UL approved. Mounting brackets included. Weatherproof enclosure.

SIGNAL CABLE: 2 sets of 18 gauge stranded wire, 40 feet long per set.
WARRANTY: 5 years parts and labor.

SHIPPING WEIGHT: 7.0 Lbs

CARTON DIMENSIONS: 15.25" x 14.25" x 4"